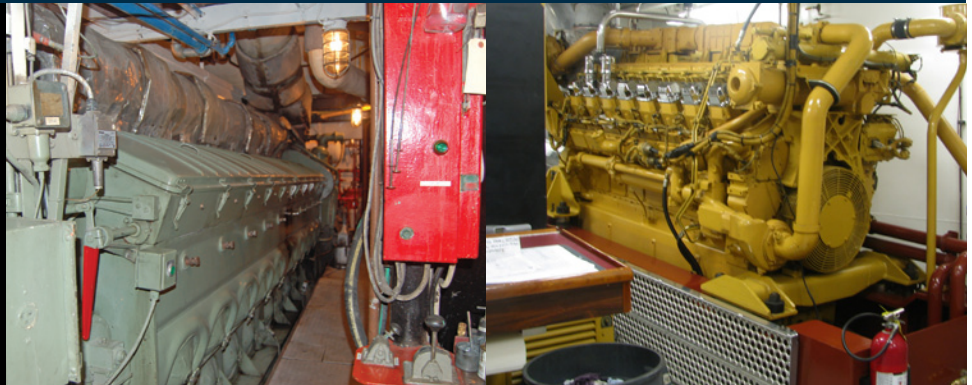


# DIESEL POWER TRAINING SEMINAR



PACIFIC MARITIME INSTITUTE

## Perspective

The Diesel Power Training Seminar covers the design and construction of marine vessels, how and why they are constructed, and how and why the components work, with emphasis on diesel engines.

**Dates:** April 4–7th, 2011

**Duration:** 4 Days, 32 Hours

**Cost:** \$895 for the complete course or \$250 per day.

**Location:** Seattle, WA

**To Register:**

Jennifer Pitzen

206 838 1126

[jpitzen@mates.org](mailto:jpitzen@mates.org)

For more information call

Charlie Walther direct at: (415) 454-7045

or email [charwalther@aol.com](mailto:charwalther@aol.com)

Fuel, cooling, lubrication, air intake, and exhaust systems will be discussed in detail. Power generation, fuel consumption and conservation, and emissions are covered. Operational aspects will be presented including flotation, speed, power, auxiliaries, maintenance, engine inspection and troubleshooting. Safety of design, construction, operation and maintenance will be highlighted. Students will have three days of classroom training followed by one day of hands-on training.

The instructor, Charlie Walther, holds a Chief Engineer license and has over 35 years experience with workboats, ferries and diesel engines and has presented this and other courses for industry and military personnel.

The course will be presented at the Pacific Maritime Institute at 1729 Alaskan Way South, Seattle, Washington. The hands-on day will be held at K-Sea Transportation on Commodore Way, using an EMD engine. A power pack, pumps, and fuel system will be replaced and engine tune up procedures will be done by the students.

### Objectives

- Basic Principals
- Engine Construction
- Operating Principles
- Components
- Details of Vessels
- Troubleshooting
- Systems (Cooling, Lube, etc.)
- Component Changeout
- Power Development
- Tune up and Inspections
- Fuel Management
- Review